



# NUESTRA SEÑORA DE LA SALETTE SCHOOL CLASS SCHEDULES



## KINDER

HOUR/ DAY	MONDAY	TUESDAY	WEDNESDAY	THURSDAY	FRIDAY
<b>UNIFORM</b>	FORMAL UNIFORM	FORMAL UNIFORM	TRACKSUIT	FORMAL UNIFORM	TRACKSUIT
7:00 A 7:55	CITIZEN COMPETENCES	MATH	PHYSICAL EDUCATION	TECHNOLOGY	PHYSICAL EDUCATION
7:55 A 8:50	ART	MATH	ENGLISH	ENGLISH	TECHNOLOGY
8:50 A 9:45	ART	LUDIC ACTIVITIES	ENGLISH	ENGLISH	NATURAL & SOCIAL SCIENCE
<b>BREAK TIME</b>					
10:15 A 11:10	MATH	ENGLISH	ESPAÑOL	MATH	ART
11:10 A 12:05	MATH	ENGLISH	ESPAÑOL	MATH	RELIGIOUS EDUCATION
<b>BREAK TIME</b>					
12:35 A 1:30	ESPAÑOL	NATURAL & SOCIAL SCIENCE	NATURAL & SOCIAL SCIENCE	VALUES	ESPAÑOL
1:30 A 2:15	ESPAÑOL	NATURAL & SOCIAL SCIENCE	NATURAL & SOCIAL SCIENCE	VALUES	ESPAÑOL



## PRESCHOOL - TRANSITION

HOUR/ DAY	MONDAY	TUESDAY	WEDNESDAY	THURSDAY	FRIDAY
<b>UNIFORM</b>	FORMAL UNIFORM	FORMAL UNIFORM	TRACKSUIT	FORMAL UNIFORM	TRACKSUIT
7:00 A 7:55	NATURAL & SOCIAL SCIENCE	VALUES	PHYSICAL EDUCATION	MATH	PHYSICAL EDUCATION
7:55 A 8:50	MATH	ART	TECHNOLOGY	MATH	ENGLISH
8:50 A 9:45	MATH	ART	ESPAÑOL	TECHNOLOGY	ENGLISH
<b>BREAK TIME</b>					
10:15 A 11:10	ENGLISH	MATH	ENGLISH	ESPAÑOL	MATH
11:10 A 12:05	ENGLISH	MATH	ENGLISH	ESPAÑOL	MATH
<b>BREAK TIME</b>					
12:35 A 1:30	ESPAÑOL	NATURAL & SOCIAL SCIENCE	RELIGIOUS EDUCATION	NATURAL & SOCIAL SCIENCE	NATURAL & SOCIAL SCIENCE
1:30 A 2:15	ESPAÑOL	NATURAL & SOCIAL SCIENCE	CITIZEN COMPETENCES	VALUES	LUDIC ACTIVITIES

# PRIMARY SCHOOL

## 1<sup>ST</sup> GRADE

HOUR/ DAY	MONDAY	TUESDAY	WEDNESDAY	THURSDAY	FRIDAY
<b>UNIFORM</b>	TRACKSUIT	FORMAL UNIFORM	TRACKSUIT	FORMAL UNIFORM	FORMAL UNIFORM
7:00 A 7:55	MATH	ESPAÑOL	ESPAÑOL	MATH	ESPAÑOL
7:55 A 8:50	PHYSICAL EDUCATION	ENGLISH	PHYSICAL EDUCATION	ART	ESPAÑOL
8:50 A 9:45	TECHNOLOGY	ENGLISH	TECHNOLOGY	ART	MATH
<b>BREAK TIME</b>					
10:15 A 11:10	ART	MATH	GEOMETRY	ENGLISH	SCIENCE
11:10 A 12:05	PROYES	MATH	GEOMETRY	ENGLISH	VALUES
<b>BREAK TIME</b>					
12:35 A 1:30	SOCIAL STUDIES	SCIENCE	ENGLISH	SOCIAL STUDIES	SEXUAL & SOCIO - EMOTIONAL EDUCATION
1:30 A 2:20	SOCIAL STUDIES	SCIENCE	ENGLISH	SOCIAL STUDIES	RELIGIOUS EDUCATION



## 2<sup>ND</sup> GRADE

HOUR/ DAY	MONDAY	TUESDAY	WEDNESDAY	THURSDAY	FRIDAY
<b>UNIFORM</b>	FORMAL UNIFORM	TRACKSUIT	FORMAL UNIFORM	TRACKSUIT	FORMAL UNIFORM
7:00 A 7:55	TECHNOLOGY	ESPAÑOL	MATH	ESPAÑOL	PROYES
7:55 A 8:50	ENGLISH	PHYSICAL EDUCATION	ART	PHYSICAL EDUCATION	SOCIAL STUDIES
8:50 A 9:45	ENGLISH	TECHNOLOGY	ART	SCIENCE	VALUES
<b>BREAK TIME</b>					
10:15 A 11:10	MATH	MATH	ESPAÑOL	MATH	ENGLISH
11:10 A 12:05	ART	MATH	ESPAÑOL	SOCIAL STUDIES	ENGLISH
<b>BREAK TIME</b>					
12:35 A 1:30	SOCIAL STUDIES	SCIENCE	GEOMETRY	ENGLISH	RELIGIOUS ED.
1:30 A 2:20	SOCIAL STUDIES	SCIENCE	GEOMETRY	ENGLISH	SEXUAL & SOCIO - EMOTIONAL EDUCATION

## 3<sup>RD</sup> GRADE

HOUR/ DAY	MONDAY	TUESDAY	WEDNESDAY	THURSDAY	FRIDAY
<b>UNIFORM</b>	FORMAL UNIFORM	TRACKSUIT	FORMAL UNIFORM	TRACKSUIT	FORMAL UNIFORM
7:00 A 7:55	Science	PHYSICAL EDUCATION	SOCIAL STUDIES	PHYSICAL EDUCATION	MATH
7:55 A 8:50	ENGLISH	TECHNOLOGY	ENGLISH	TECHNOLOGY	ART
8:50 A 9:45	ENGLISH	SEXUAL & SOCIO - EMOTIONAL EDUCATION	ENGLISH	MATH PROJECT	ART
<b>BREAK TIME</b>					
10:15 A 11:10	ESPAÑOL	ENGLISH	ESPAÑOL	ART	SOCIAL STUDIES
11:10 A 12:05	ESPAÑOL	ENGLISH	SCIENCE	SOCIAL STUDIES	RELIGIOUS EDUCATION
<b>BREAK TIME</b>					
12:35 A 1:30	SOCIAL STUDIES	MATH	MATH	GEOMETRY	ESPAÑOL
1:30 A 2:20	GEOMETRY	PROYES	MATH	VALUES	SCIENCE



## 4<sup>TH</sup> GRADE

HOUR/ DAY	MONDAY	TUESDAY	WEDNESDAY	THURSDAY	FRIDAY
<b>UNIFORM</b>	TRACKSUIT	FORMAL UNIFORM	TRACKSUIT	FORMAL UNIFORM	FORMAL UNIFORM
7:00 A 7:55	PHYSICAL EDUCATION	TECHNOLOGY	VALUES	SCIENCE	TECHNOLOGY
7:55 A 8:50	MATH	ESPAÑOL	MATH PROJECT	SCIENCE	MATH
8:50 A 9:45	MATH	ESPAÑOL	PHYSICAL EDUCATION	SEXUAL & SOCIO - EMOTIONAL EDUCATION	MATH
<b>BREAK TIME</b>					
10:15 A 11:10	ENGLISH	ART	SOCIAL STUDIES	GEOMETRY	ENGLISH
11:10 A 12:05	ENGLISH	ART	SOCIAL STUDIES	ART	ENGLISH
<b>BREAK TIME</b>					
12:35 A 1:30	SOCIAL STUDIES	SCIENCE	ENGLISH	ESPAÑOL	GEOMETRY
1:30 A 2:20	SOCIAL STUDIES	RELIGIOUS EDUCATION	ENGLISH	ESPAÑOL	PROYES

## 5<sup>TH</sup> GRADE

	HOUR/ DAY	MONDAY	TUESDAY	WEDNESDAY	THURSDAY	FRIDAY
	UNIFORM	TRACKSUIT	FORMAL UNIFORM	FORMAL UNIFORM	FORMAL UNIFORM	TRACKSUIT
1	7:00 A 7:55	ART	MATH	TECHNOLOGY	MATH	PROYES
2	7:55 A 8:50	MATH PROJECT	MATH	SCIENCE	MATH	PHYSICAL EDUCATION
3	8:50 A 9:45	PHYSICAL EDUCATION	VALUES	SCIENCE	RELIGIOUS EDUCATION	TECHNOLOGY
BREAK TIME						
4	10:15 A 11:10	ESPAÑOL	SCIENCE	ART	ENGLISH	SOCIAL STUDIES
5	11:10 A 12:05	ESPAÑOL	SEXUAL & SOCIO - EMOTIONAL EDUCATION	ART	ENGLISH	SOCIAL STUDIES
BREAK TIME						
6	12:35 A 1:30	ENGLISH	ENGLISH	ESPAÑOL	SOCIAL STUDIES	GEOMETRY
7	1:30 A 2:20	ENGLISH	ENGLISH	ESPAÑOL	SOCIAL STUDIES	GEOMETRY



## HIGH SCHOOL

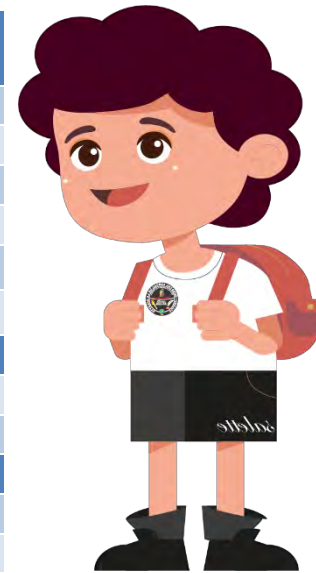


## 6<sup>TH</sup> GRADE

	HOUR/ DAY	MONDAY	TUESDAY	WEDNESDAY	THURSDAY	FRIDAY
	UNIFORM	TRACKSUIT	FORMAL UNIFORM	TRACKSUIT	FORMAL UNIFORM	FORMAL UNIFORM
1	7:00 A 7:55	MATH	ENGLISH	GEOMETRY & STAT.	ENGLISH	ENGLISH
2	7:55 A 8:50	MATH	ENGLISH	GEOMETRY & STAT.	ENGLISH	ENGLISH
3	8:50 A 9:45	BIOLOGY	ESPAÑOL	ESPAÑOL	CHEMISTRY	BIOLOGY
4	9:45 A 10:40	BIOLOGY	ESPAÑOL	ESPAÑOL	MATH PROJECT	BIOLOGY
DESCANSO						
5	11:10 A 12:05	SOCIAL STUDIES	SOCIAL STUDIES	PHYSICAL ED.	PHYSICS	MATH
6	12:05 A 1:00	SOCIAL STUDIES	SOCIAL STUDIES	TECHNOLOGY	TECHNOLOGY	MATH
DESCANSO						
7	1:30 A 2:25	PHYSICAL ED.	ART	MATH PROJECT	D. De CURSO	VALUES
	2:25 A 2:30	CLASSROOM ORGANIZATION				

## 7<sup>TH</sup> GRADE

	HOUR/ DAY	MONDAY	TUESDAY	WEDNESDAY	THURSDAY	FRIDAY
	UNIFORM	FORMAL UNIFORM	TRACKSUIT	FORMAL UNIFORM	TRACKSUIT	FORMAL UNIFORM
1	7:00 A 7:55	BIOLOGY	BIOLOGY	ESPAÑOL	ESPAÑOL	MATH
2	7:55 A 8:50	BIOLOGY	BIOLOGY	ESPAÑOL	ESPAÑOL	MATH
3	8:50 A 9:45	GeOMETRY & STAT.	ENGLISH	ENGLISH	SOCIAL STUDIES	ENGLISH
4	9:45 A 10:40	GeOMETRY & STAT.	ENGLISH	ENGLISH	SOCIAL STUDIES	ENGLISH
DESCANSO						
5	11:10 A 12:05	MATH PROJECT	MATH	MATH PROJECT	PHYSICAL ED.	SOCIAL STUDIES
6	12:05 A 1:00	TECHNOLOGY	MATH	PHYSICS	ART	SOCIAL STUDIES
DESCANSO						
7	1:30 A 2:25	VALUES	PHYSICAL ED.	CHEMISTRY	D. De CURSO	TECHNOLOGY
	2:25 A 2:30	CLASSROOM ORGANIZATION				



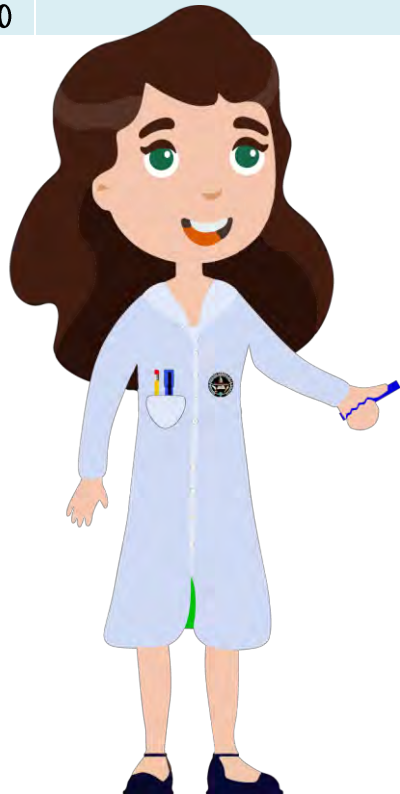
## 8<sup>TH</sup> GRADE

	HOUR/ DAY	MONDAY	TUESDAY	WEDNESDAY	THURSDAY	FRIDAY
	UNIFORM	FORMAL UNIFORM	FORMAL UNIFORM	TRACKSUIT	FORMAL UNIFORM	TRACKSUIT
1	7:00 A 7:55	ENGLISH	ESPAÑOL	SOCIAL STUDIES	ENGLISH	ENGLISH
2	7:55 A 8:50	ENGLISH	ESPAÑOL	SOCIAL STUDIES	ENGLISH	ENGLISH
3	8:50 A 9:45	ESPAÑOL	BIOLOGY	BIOLOGY	MATH	SOCIAL STUDIES
4	9:45 A 10:40	ESPAÑOL	BIOLOGY	BIOLOGY	MATH	SOCIAL STUDIES
DESCANSO						
5	11:10 A 12:05	MATH	MATH PROJECT	GeOMETRY & STAT.	TECHNOLOGY	PHYSICAL ED.
6	12:05 A 1:00	MATH	PHYSICS	GeOMETRY & STAT.	MATH PROJECT	ART
DESCANSO						
7	1:30 A 2:25	TECHNOLOGY	VALUES	PHYSICAL ED.	D. De CURSO	CHEMISTRY
	2:25 A 2:30	CLASSROOM ORGANIZATION				



## 9<sup>TH</sup> GRADE

	HOUR/ DAY	MONDAY	TUESDAY	WEDNESDAY	THURSDAY	FRIDAY
	UNIFORM	FORMAL UNIFORM	TRACKSUIT	FORMAL UNIFORM	FORMAL UNIFORM	TRACKSUIT
1	7:00 A 7:55	ESPAÑOL	SOCIAL STUDIES	ENGLISH	SOCIAL STUDIES	MATH
2	7:55 A 8:50	ESPAÑOL	SOCIAL STUDIES	ENGLISH	SOCIAL STUDIES	MATH
3	8:50 A 9:45	ENGLISH	PHYSICAL ED.	BIOLOGY	MATH	GEOMETRY & STAT.
4	9:45 A 10:40	ENGLISH	TECHNOLOGY	BIOLOGY	MATH	GEOMETRY & STAT.
<b>DESCANSO</b>						
5	11:10 A 12:05	PHYSICS	BIOLOGY	CHEMISTRY	ESPAÑOL	ENGLISH
6	12:05 A 1:00	PHYSICS	BIOLOGY	CHEMISTRY	ESPAÑOL	TECHNOLOGY
<b>DESCANSO</b>						
7	1:30 A 2:25	MATH PROJECT	VALUES	ART	D. DE CURSO	PHYSICAL ED.
	2:25 A 2:30	<b>CLASSROOM ORGANIZATION</b>				



## 10<sup>TH</sup> GRADE

	HOUR/ DAY	MONDAY	TUESDAY	WEDNESDAY	THURSDAY	FRIDAY
	UNIFORM	FORMAL UNIFORM	TRACKSUIT	FORMAL UNIFORM	FORMAL UNIFORM	TRACKSUIT
1	7:00 A 7:55	PHILOSOPHY	MATH	CHEMISTRY	MATH	SOCIAL STUDIES
2	7:55 A 8:50	PHILOSOPHY	MATH	CHEMISTRY	MATH	SOCIAL STUDIES
3	8:50 A 9:45	PHYSICS	BIOLOGY	PHYSICS	ESPAÑOL	PHYSICAL ED.
4	9:45 A 10:40	PHYSICS	BIOLOGY	PHYSICS	ESPAÑOL	TECHNOLOGY
<b>DESCANSO</b>						
5	11:10 A 12:05	ENGLISH	PHYSICAL ED.	ENGLISH	CHEMISTRY	ESPAÑOL
6	12:05 A 1:00	ENGLISH	MATH PROJECT	ENGLISH	CHEMISTRY	ESPAÑOL
<b>DESCANSO</b>						
7	1:30 A 2:25	VALUES	TECHNOLOGY	STATISTICS	D. DE CURSO	ART
	2:25 A 2:30	<b>CLASSROOM ORGANIZATION</b>				

# 11<sup>TH</sup> GRADE

HOUR/ DAY	MONDAY	TUESDAY	WEDNESDAY	THURSDAY	FRIDAY	
UNIFORM	TRACKSUIT	FORMAL UNIFORM	FORMAL UNIFORM	TRACKSUIT	FORMAL UNIFORM	
1	7:00 A 7:55	PHYSICS	ENGLISH	PHYSICS	CHEMISTRY	ESPAÑOL
2	7:55 A 8:50	PHYSICS	ENGLISH	PHYSICS	CHEMISTRY	ESPAÑOL
3	8:50 A 9:45	SOCIAL STUDIES	MATH	PHILOSOPHY	PHYSICAL ED.	MATH
4	9:45 A 10:40	SOCIAL STUDIES	MATH	PHILOSOPHY	TECHNOLOGY	MATH
<b>DESCANSO</b>						
5	11:10 A 12:05	PHYSICAL ED.	ESPAÑOL	BIOLOGY	ENGLISH	CHEMISTRY
6	12:05 A 1:00	MATH PROJECT	ESPAÑOL	BIOLOGY	ENGLISH	CHEMISTRY
<b>DESCANSO</b>						
7	1:30 A 2:25	ART	STATISTICS	TECHNOLOGY	D. De CURSO	VALUES
	2:25 A 2:30	CLASSROOM ORGANIZATION				



## FORMAL UNIFORM



## TRACKSUIT

